

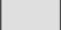





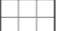
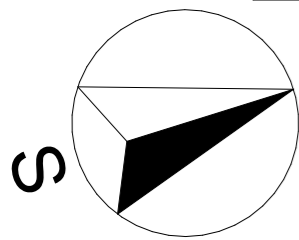
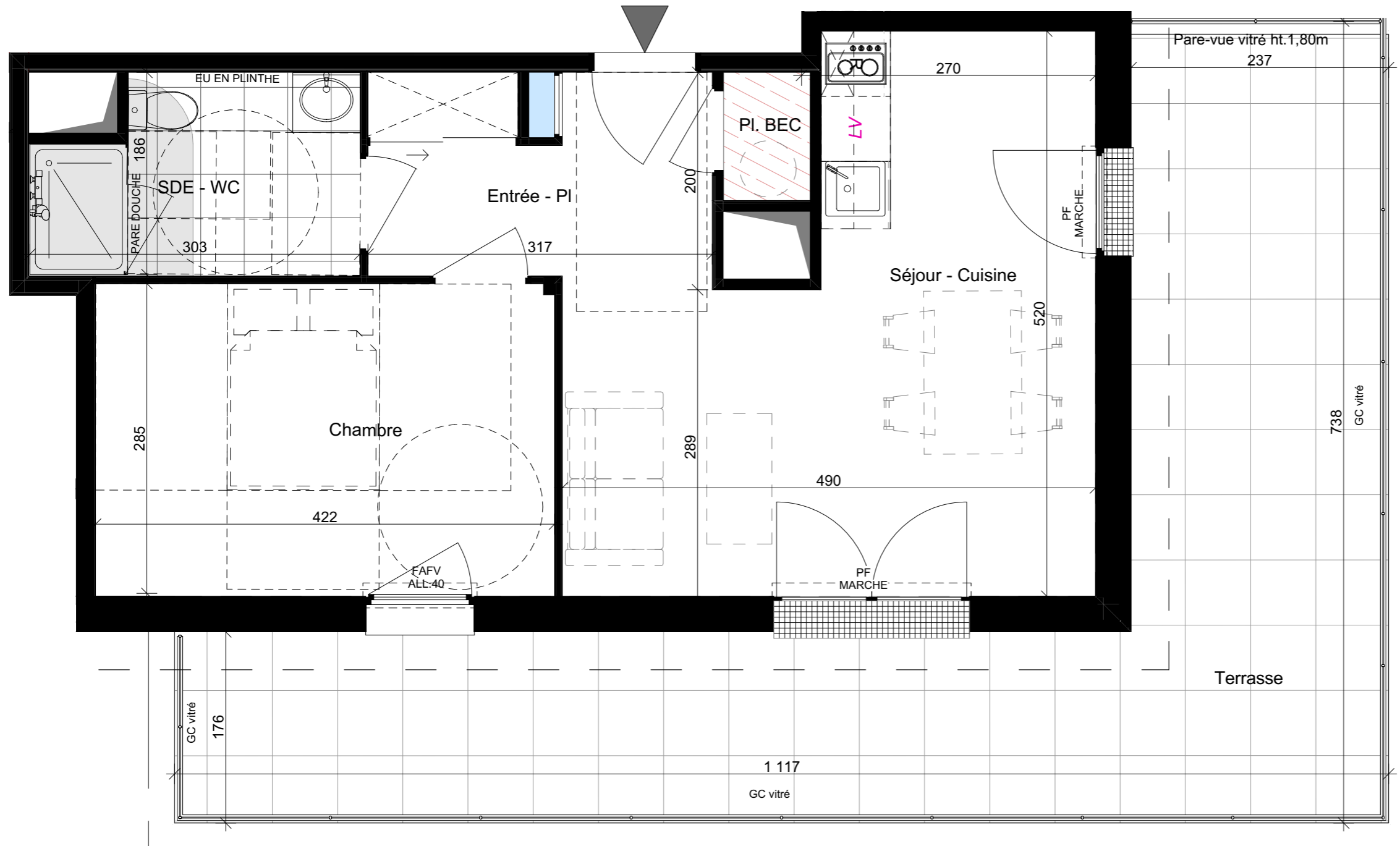


# PLAN DE RESERVATION

## LEGENDE

-  ETEL : Tableau électrique
-  Gaine technique
-  Implantation PC interdite
-  Soffite ou Faux-plafond
-  Terrasse ou loggia en dalles sur plots
-  Balcon sur platelage bois
-  Grille caillebotis
-  Accessibilité Personne à Mobilité Réduite
-  Carrelage

- PF : Porte-Fenêtre ouvrant à la française
- FAFV : Fenêtre sur Allège Fixe Vitrée Oscillo Battant
- F : Fenêtre Oscillo Battant
- VRE : Volet Roulant Electrique
- Pl. BEC : Placard Ballon d'Eau Chaude thermo-dynamique
- Pl. : Placard
- 2m50 Hauteur sous plafond en partie courante



SASU AP67

Boulevard Ronsard, 44150 Ancenis-Saint-Géréon



## PADW

SCOP D'ARCHITECTURE

BATIMENT	NIVEAU	TYPE	N°LOG
A	3	T2	A303

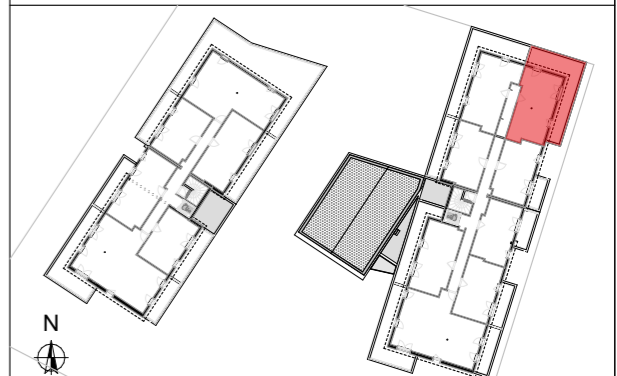
### SURFACES HABITABLES

Entrée - PI	5,8
Séjour - Cuisine	19,8
Chambre	12,1
SDE - WC	5,1
Pl. BEC	1,0
<b>Total surfaces habitables</b>	<b>43,8 m<sup>2</sup></b>

### SURFACES ANNEXES

Terrasse	32,7
<b>Total surfaces annexes</b>	<b>32,7 m<sup>2</sup></b>





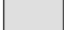




### PLAN DE REPERAGE

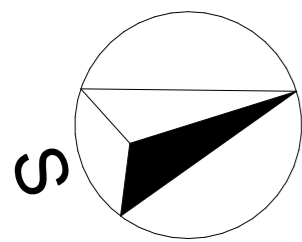
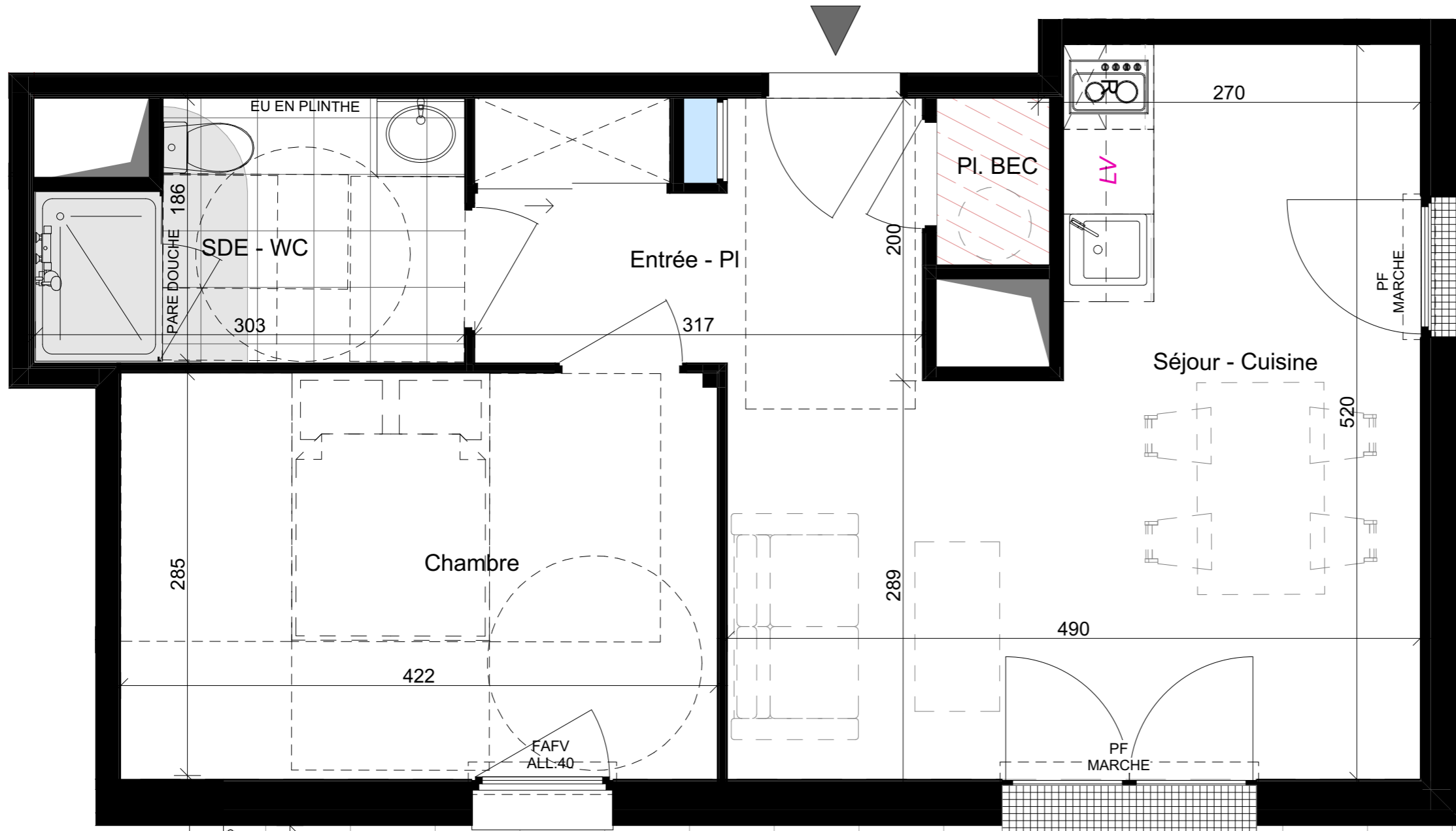


DATE CREATION	30/04/2025
DATE MISE A JOUR	19/03/2026
ECHELLE	1:43

# PLAN DE RESERVATION

## LEGENDE

- |   |                           |   |   |  |
|---|---------------------------|---|---|--|
|  | Tableau électrique        |  | Terrasse ou loggia en dalles sur plots    | PF : Porte-Fenêtre ouvrant à la française              |
|  | Gaine technique           |  | Balcon sur platelage bois                 | FAFV : Fenêtre sur Allège Fixe Vitrée Oscillo Battant  |
|  | Implantation PC interdite |  | Grille caillebotis                        | F : Fenêtre Oscillo Battant                            |
|  | Soffite ou Faux-plafond   |  | Accessibilité Personne à Mobilité Réduite | VRE : Volet Roulant Electrique                         |
|   |                           |  | Carrelage                                 | Pl. BEC : Placard Ballon d'Eau Chaude thermo-dynamique |
|   |                           |   |   | Pl. : Placard  |
|   |                           |   |   | 2m50 Hauteur sous plafond en partie courante           |



SASU AP67

Boulevard Ronsard, 44150 Ancenis-Saint-Géréon



## PADW

SCOP D'ARCHITECTURE

BATIMENT	NIVEAU	TYPE	N°LOG
A	3	T2	A303

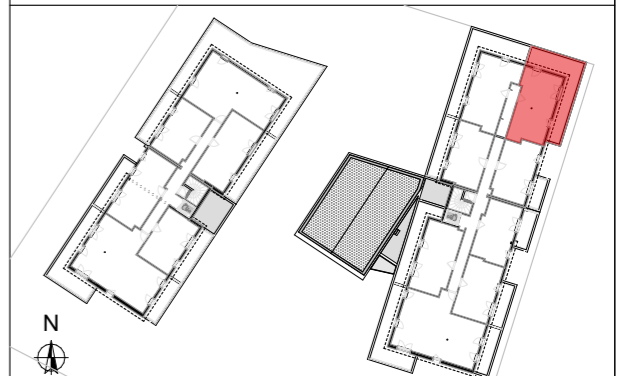
### SURFACES HABITABLES

Entrée - Pl	5,8
Séjour - Cuisine	19,8
Chambre	12,1
SDE - WC	5,1
Pl. BEC	1,0
<b>Total surfaces habitables</b>	<b>43,8 m<sup>2</sup></b>

### SURFACES ANNEXES

Terrasse	32,7
<b>Total surfaces annexes</b>	<b>32,7 m<sup>2</sup></b>

### PLAN DE REPERAGE



DATE CREATION 30/04/2025

DATE MISE A JOUR 19/03/2026

ECHELLE 1:35